



RT-Thermolight

RT-Thermolight



RT-Thermolight

RT-Thermolight

Multi Wall Sheets
Hohlkammerscheiben

RT Roof Lights
RT-Dachlichtbänder

U-Panels
J-Paneele

Multi Function Panels
Multi-Funktion-Paneele

Translucent Building Elements
Lichtbauelemente

Windows
Fenster

Do it yourself
Do it yourself

RT-Thermolight

Advantages

- quick and easy installation
- translucent
- heat-insulating
- high temperature resistance
- versatile designing in shape, colour and function
- good long term performance through UV protection
- 200 x times tougher than glass
- Shatter proof

Applications

- Roofings
- Sports and industrial buildings
- Roof constructions
- Roof lights - flat and curved
- non airconditioned spaces
- Roof lights integrated into corrugated sheet roofing construction
- Refurbishment

General information RT-Thermolight

The RT-Thermolight offers three polycarbonate panels that can be incorporated into a flat, trapezoidal or corrugated roof construction to various widths. Offering high insulation values and light transmission these light weight systems are extremely weather and impact resistant.

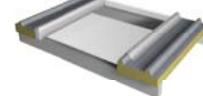

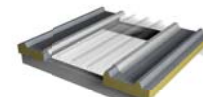

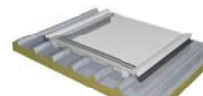

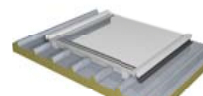

With minimal use of alloy components all systems are quick, easy and economical to install.

List of content

Overview RT-Thermolight	page 2
PC 2685-3	page 3
PC 29330-XL	page 4
Thermolight 1000	page 5

Overview RT-Thermolight

The following table shows an overview of the RT-Thermolight systems from Rodeca. The specified span widths relate to a load pressure of 1.00 kN/m². Please enquire for project specific load information.

29330-XL 	pitched system >5° 	Span width 1.30m*
2685-3 	pitched system >5° 	Span width 1.50m*
Thermolight 1000 	pitched system >5° 	Span width 3.00m*
Thermolight 1000 	curved application R>10,00m 	Span width 3.00m*

* Recommended span width with 1.00kN/m² and 15° pitch.

Polycarbonate panels



PC 29330-XL

Colours
Crystal / slightly opal from 3t

Thickness (mm)	30
Building width (mm)	930 (+1/-1%)
Weight (kg/linear meter)	3.6



Thermolight 1000

Colours
Standard: crystal

Thickness (mm)	20
Building width (mm)	1080 (+1/-1%)
Weight (kg/m ²)	3.10



PC 2685-3

Colours
Standard: crystal Color version: from 400 m²

Thickness (mm)	40/85
Building width (mm)	600(+1/-1%)
Weight (kg/m ²)	5.20

All installation advice, application requirements and further technical information can be viewed in our technical manuals and installation manuals.

RODECA GmbH
Freiherr-vom-Stein-Straße 165
D-45473 Mülheim an der Ruhr
Fon +49 (0) 208 76502-0 | Fax +49 (0) 208 76502-11
info@rodeca.de | www.rodeca.de

RT-Thermolight

Multi Wall Sheets
Hohlkammerscheiben

RT Roof Lights
RT-Dachlichtbänder

U-Panels
J-Paneele

Multi Function Panels
Multi-Funktions-Paneele

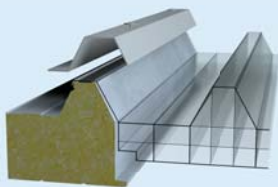
Translucent Building Elements
Lichtbauelemente

Windows
Fenster

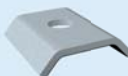
Do it yourself
Do it yourself

RT-Thermolight

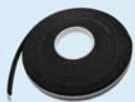
Accessories



Recommended fixing
End plates (provided from installer) on top of the high corrugation and Polycarbonate panel



Alternate fixing
Retention washer
Item no.: 494002



Sealing band 30*5
Item no.: 9019020005

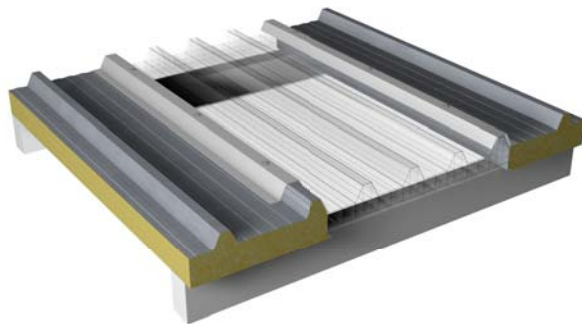
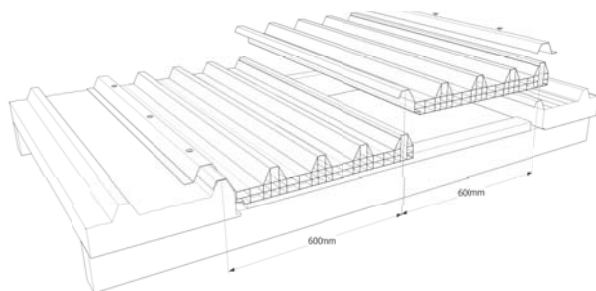
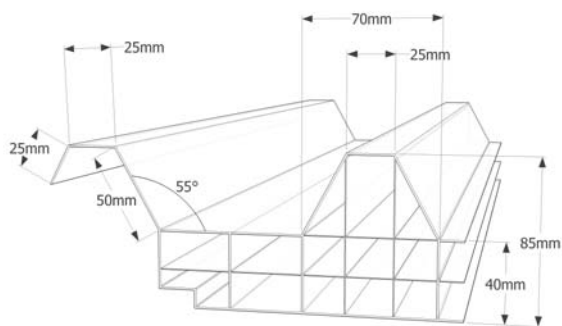


2685-3

Thickness (mm)	40/85
Building width (mm)	600 (+1/-1%)
Weight (kg/m²)	5.2

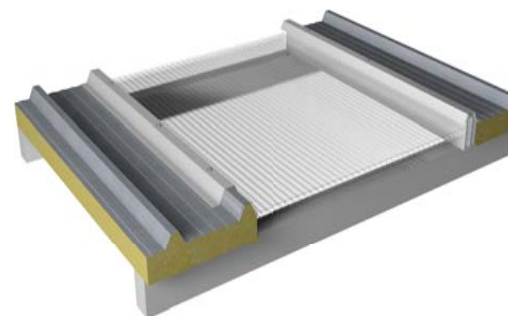
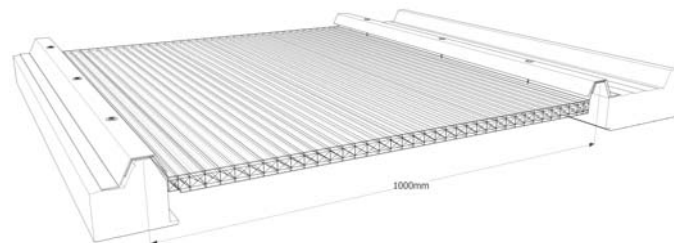
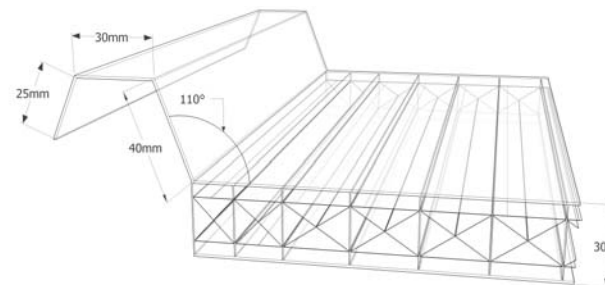
2685-3

Our polycarbonate panel 2685-3 has a minimum thickness of 40mm and a maximum thickness of 85mm with a building width of 600mm. The panels can be interlocked to accommodate different width openings.

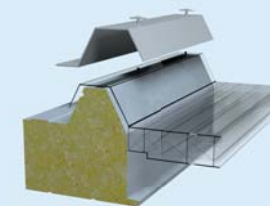


29330-XL

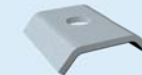
The 29330-XL is 30mm thick and offers a flexible holding fixture for various high corrugations. The side lap feature (depending on the ordered quantity) can be customized to requirements. We recommend fixing to the high corrugations.



Accessories



Recommended fixing
End plates (provided from installer) on top of the high corrugation and polycarbonate panel



Alternate fixing
Retention washer
Item no.: 494002

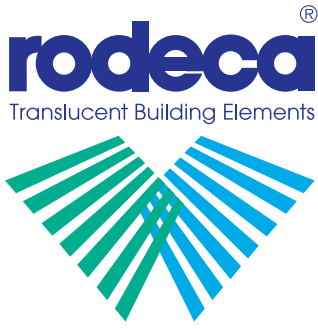


Sealing band 30*5
Item no.: 9019020005



29330-XL

Thickness (mm)	30
Building width (mm)	930 (+1/-1%)
Weight (kg/linear meter)	3.60



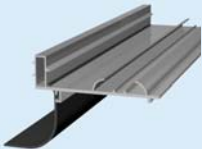
RT-Thermolight

Multi Wall Sheets
Hohlkammerscheiben

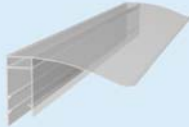
RT Roof Lights
RT-Dachlichtbänder

U-Panels
U-Paneele

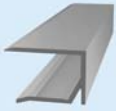
RT-Thermolight Accessories



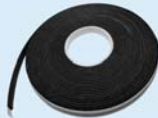
Base profile
Item no.: 46208060
with gasket
Item no.: 902107 EPDM black



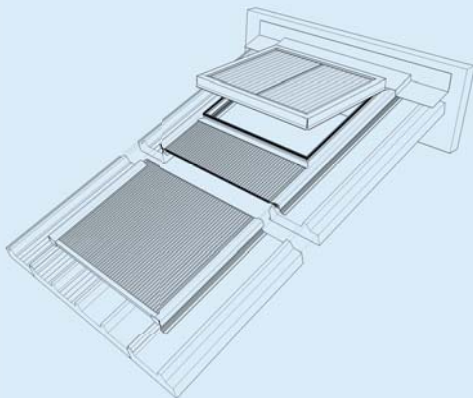
Polycarbonate cover profile
Item no.: 881111



Drip profile
Item no.: 462011



Sealing band 30*5
Item no.: 9019020005



Roof-integrated window

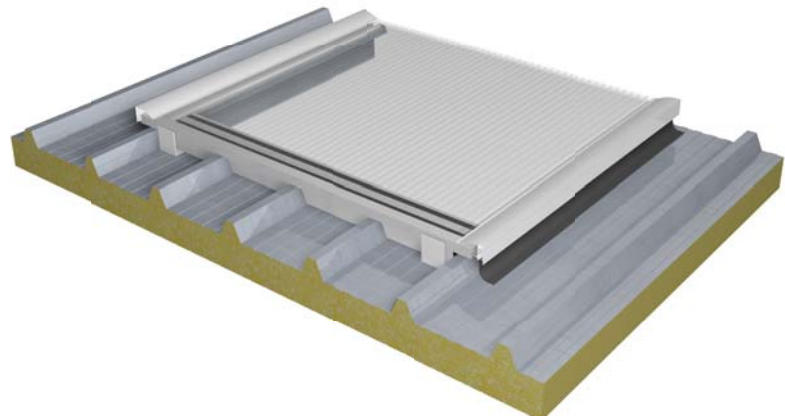
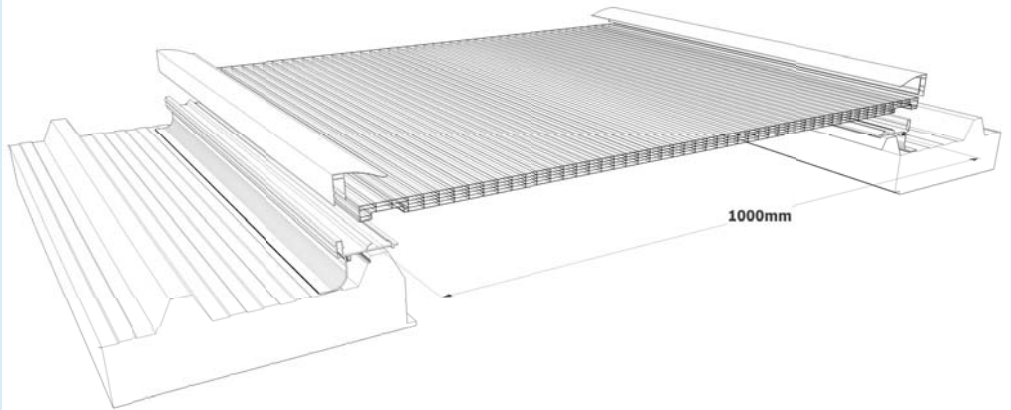
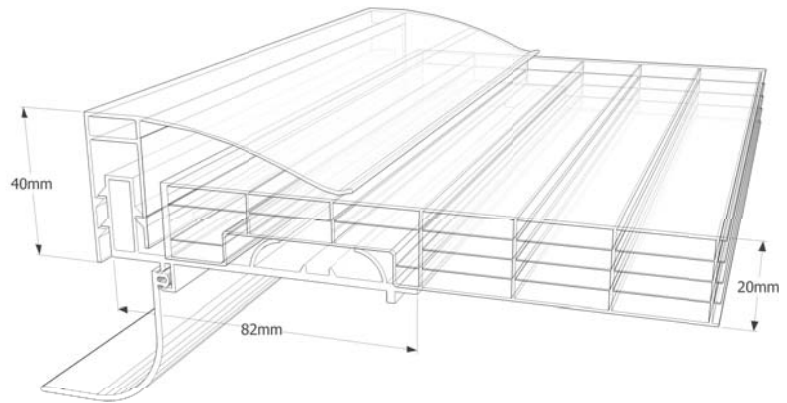


RT Thermolight 1000

Thickness (mm)	20
Building width (mm)	1080 (+1/-1%)
Weight (kg/m ²)	3.1

Thermolight 1000

The RT Thermolight comprises a 20mm thick Polycarbonate multi wall sheet with side integrated corrugations placed onto custom-fitted aluminium profiles. The cover width of 1000mm makes it the ideal solution for non-airconditioned spaces with established sandwich panel roofing. Integrated ventilation windows can be installed with a recommended minimum pitch of 10°.





Qualität made in Germany – planen Sie mit uns

RODECA überzeugt seit über 40 Jahren mit Innovation und Erfahrung. Unsere vielfältig einsetzbaren, transparenten Bauelemente aus Polycarbonat sorgen weltweit für Aufsehen, zahlreiche Architekturpreise und Auszeichnungen belegen unsere Philosophie.

Planen Sie mit RODECA die Fassaden von morgen.

Quality made in Germany – Design with RODECA

RODECA is the market leader in innovation and design with more than 40 years experience in the manufacture of translucent materials. Our architectural award winning, transparent polycarbonate building elements are recognised worldwide, demonstrating our philosophy. Design with RODECA the facades of tomorrow.

RODECA GmbH
Freiherr-vom-Stein-Straße 165
D-45473 Mülheim an der Ruhr
Fon +49 (0) 208 76502-0
Fax +49 (0) 208 76502-11
info@rodeca.de
www.rodeca.de

The RODECA product groups overview / Die RODECA Produktgruppen im Überblick:



Translucent Building Elements

Lichtbauelemente



Multi Wall Sheets

Hohlkammerscheiben



Multi Function Panels

Multi-Funktions-Paneele



U-Panels

U-Paneele



RT-Thermolight

RT-Thermolight



Roof Lights

RT-Dachlichtbänder



Windows

Fenster



Do it yourself

Do it yourself